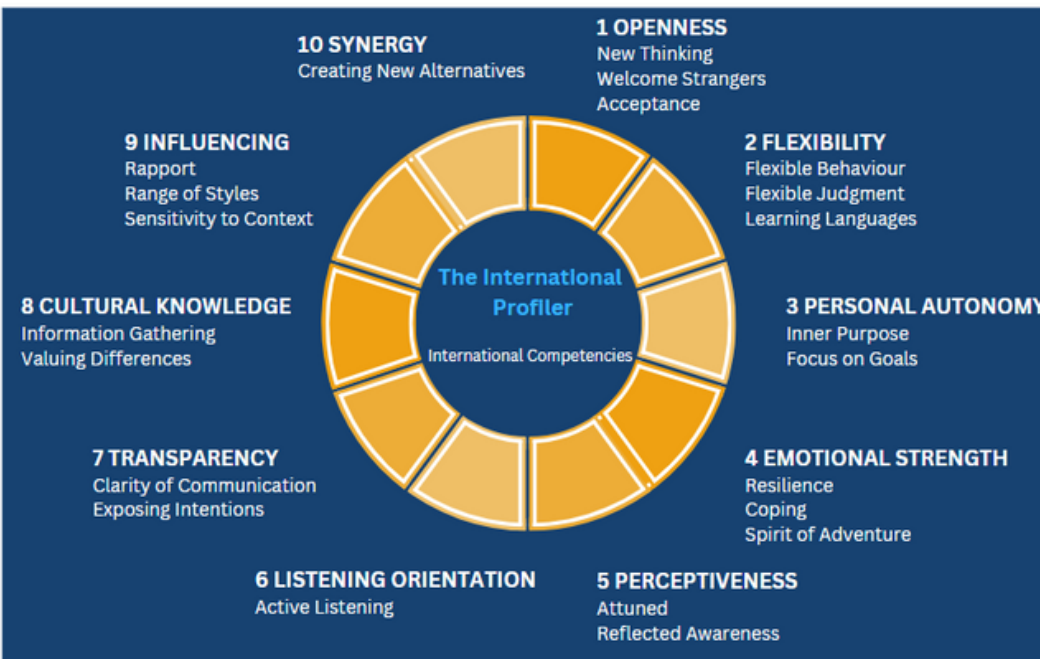


# Babel

## LANGUAGE AND CULTURAL TRAINING

## THE INTERNATIONAL PROFILER



People who complete the **International Profiler** (TIP™) process will become more self-aware and will be able to adopt behavioural strategies appropriate for the particular intercultural context that they are working in. It is a personal development process, based on a psychometric questionnaire resulting in a detailed personal feedback report. The development process also includes a feedback session from our certified coach.

### How does TIP work?

The International Profiler identifies 10 competencies and 22 dimensions which represent the traits that a good global leader needs to be successful. The questionnaire explores the relative energy, emphasis and attention professionals bring to the competency set when involved in transferring their skills to unfamiliar, cross-cultural contexts.

It contains 80 questions and a biographical section and is available in English, Chinese, French, German, Italian, Polish, Spanish. It takes on average 40 minutes to complete it.

Our scheduled 75-minute feedback session then provides:

- a structured discussion of this energy considering present or future international challenges
- identification of three or four qualities requiring greater energy in the future
- initiation of a development process involving creation of a 'Personal Development Plan' (PDP) by the participant

Contact us to learn how you can access The International Profiler.

**Contact**  
Sue Curry  
Director  
E: [sue.curry@babelgroup.co.uk](mailto:sue.curry@babelgroup.co.uk)  
T: 020 8295 5877  
W: [www.babelgroup.co.uk](http://www.babelgroup.co.uk)